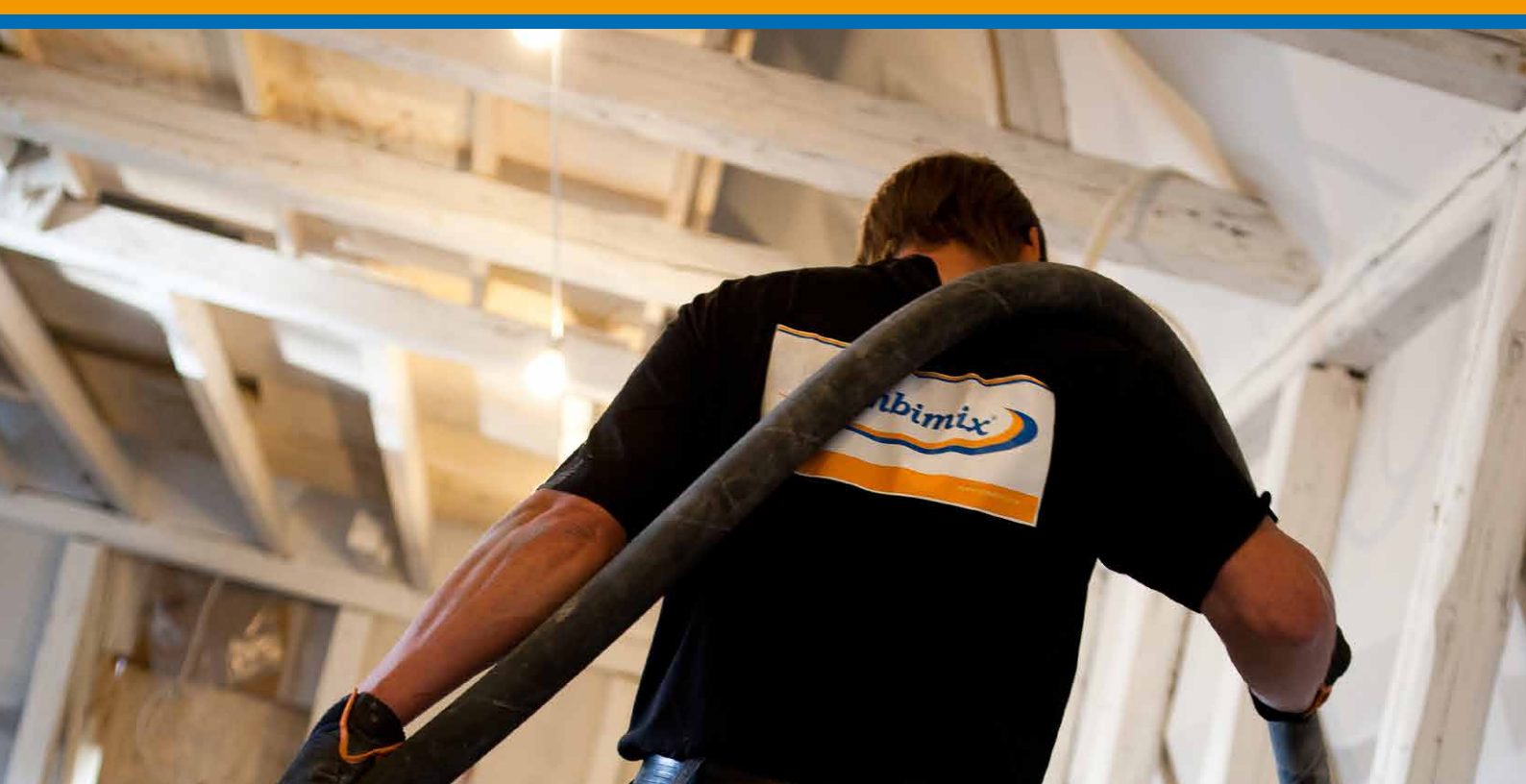




# Floor levelling





## Combining experience with a pioneering spirit.

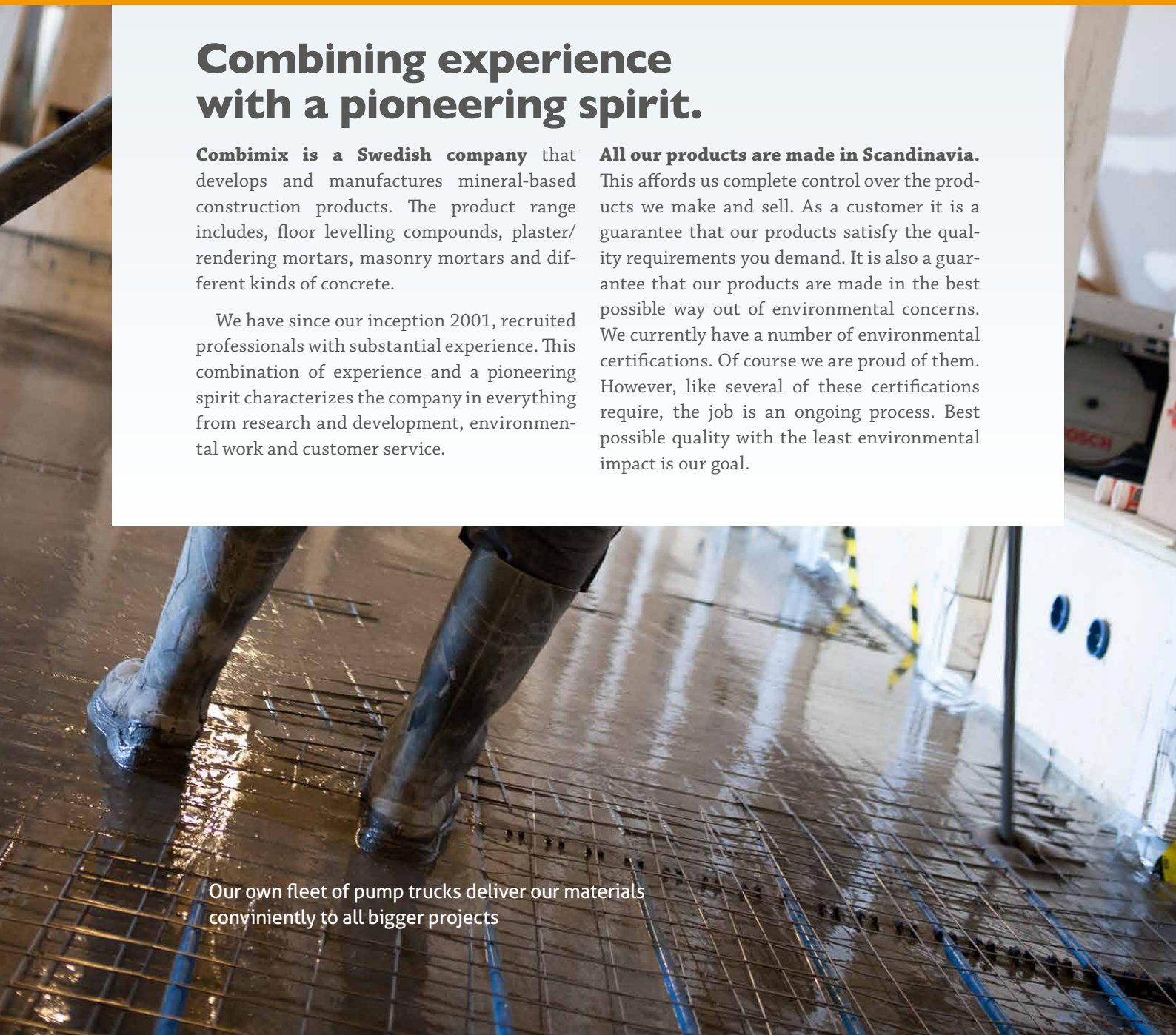
**Combimix is a Swedish company** that develops and manufactures mineral-based construction products. The product range includes, floor levelling compounds, plaster/rendering mortars, masonry mortars and different kinds of concrete.

We have since our inception 2001, recruited professionals with substantial experience. This combination of experience and a pioneering spirit characterizes the company in everything from research and development, environmental work and customer service.

**All our products are made in Scandinavia.**

This affords us complete control over the products we make and sell. As a customer it is a guarantee that our products satisfy the quality requirements you demand. It is also a guarantee that our products are made in the best possible way out of environmental concerns. We currently have a number of environmental certifications. Of course we are proud of them. However, like several of these certifications require, the job is an ongoing process. Best possible quality with the least environmental impact is our goal.

Our own fleet of pump trucks deliver our materials conveniently to all bigger projects





# 17

floor levelling products for different substrates and requirements. From big to small projects. From pedestrian traffic to heavy machines.

## Quality still matters

Our wide range of floor products is the foundation of our business. We have 17 different products for various substrates and required application thickness. Whatever your requirements, we are confident that we have a product which will suite your needs.

As a customer, you not only get products of the highest quality you are also assured the highest level of delivery reliability.

We offer several delivery options, depending on the extent of the building project. For larger projects and large volumes we have our own fleet of pump trucks. For medium-sized to smaller projects we offer a service whereby you can hire a mobile pump and staff from us.

For more information about our pump trucks and services, give us a call on +46 171-46 65 90



# Choosing the right floor levelling product is simple. Trust us.

Whatever result you are looking for, Com-bimix can help you make the right choice. There are, however, four fundamental factors to bear in mind; substrate, thickness, drying time and floor covering.

We have products for all types of substrates, everything from concrete to wood. When you know how thick you need to apply the screed, choose a product from our product guide (see next spread). In some cases it may be both financially and technically

advantageous to combine two different floor products.

The drying times of our products vary. We have fast drying products. The drying times apply at normal room temperature and at ca. 40 % RH in the air.

Our products meet the varying compressive strength requirements of different floor coverings.

## How to lay a sound foundation.

**Before you commence a floor** levelling project bear in mind the following.

**What does the surface look like?** Different substrates and surface residues require different methods of removal. Carry out a tensile test to see if the substrate meets the resistance requirement for the screed if any uncertainty exists. When the substrate is free/clean from dust, glue residues, cement skin and other types of pollution, you always need to prime the surface. The substrate temperature should not be less than 10 °C. Brush in our PP 600 primer with a soft brush. Drying times etc. are given on all of our packaging. It is also important to avoid leakages against walls, ducts and drains. Use self-adhesive foam strips for door openings and drain edges. To ensure the evenness of the finished floor carry out a differential levelling. Check the floor with straightedge, hose pass or laser. Mark depres-

sions or inclines. When building a slope make marks on the wall. Always check the flow rate to ensure the correct water content. When you mix in a bucket you do not need to slump test the mixture. Just be accurate with the volume of water.

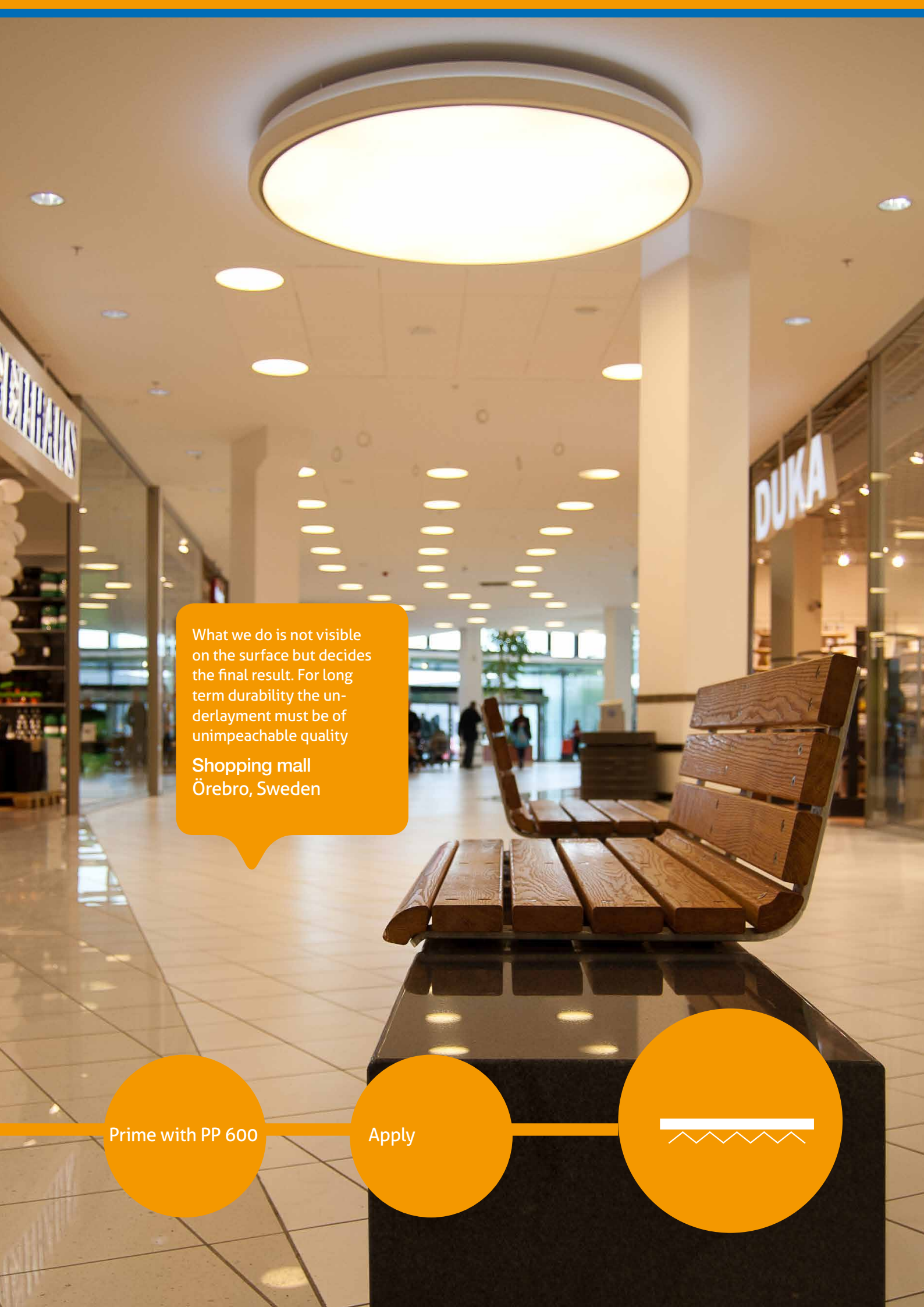
**On the following pages** is a product guide to help you choose the right product for your job. You will find drying times, suitable substrates and required application thickness for our various products. You will also find important facts about the products.

**Contact our sales department** on +46 171-46 65 90 if you need more help preparing your job.



Choose a product

Prepare  
the surface



What we do is not visible on the surface but decides the final result. For long term durability the underlayment must be of unimpeachable quality

Shopping mall  
Örebro, Sweden

Prime with PP 600

Apply



# Product guide

Product	Application thickness	Pump-able	Flow rate 30x50mm ring	Walkable	Drying time	Material consumption
---------	-----------------------	-----------	---------------------------	----------	-------------	----------------------

## Self-levelling screeds

CM 100	5–70 mm, 6–20 mm lightweight concrete	Yes	140 mm ****	1–3 hrs	10 mm/week	1.7 kg/m <sup>2</sup> /mm
CM 420	3–30 mm	Yes	145 mm	4 hrs	1–3 days	1.1 kg/m <sup>2</sup> /mm
CM 700	5–70 mm, 6–20 mm lightweight concrete	Yes	135 mm *	1–3 hrs	10 mm/week	1.7 kg/m <sup>2</sup> /mm
CM 720	3–30 mm, 6–10 mm lightweight concrete	Yes	145 mm	1–3 hrs	10 mm/week	1.6 kg/m <sup>2</sup> /mm
CM 740	3–30 mm, 6–10 mm lightweight concrete	Yes	145 mm	1–3 hrs	12–24 hrs	1.6 kg/m <sup>2</sup> /mm
CM 760	5–50 mm, 6–20 mm lightweight concrete	Yes	135 mm	1–3 hrs	1–3 days	1.7 kg/m <sup>2</sup> /mm
CM 780	5–100 mm, 6–100 mm lightweight concrete	Yes	135 mm	1–3 hrs	1–3 days	1.8 kg/m <sup>2</sup> /mm
CM 790	15–100 mm, 15–60 mm lightweight concrete	Yes	100 mm	2–3 hrs	2–3 days	1.8 kg/m <sup>2</sup> /mm

## Hand applied screeds

FF 830	0–12 mm, 6–12 mm lightweight concrete	No	-	30–60 mins	1–3 hrs	1.2 kg/m <sup>2</sup> /mm
CM 840	0–50 mm, 6–20 mm lightweight concrete	No	-	30–60 mins	1–3 hrs	1.7 kg/m <sup>2</sup> /mm
CM 8650	25–125 mm	No	-	1,5–2 hrs	8–16 hrs	0.65 kg/m <sup>2</sup> /mm
CM 860	20–100 mm	No	-	1–2 hrs	24 hrs	1.8 kg/m <sup>2</sup> /mm
CM 870	10–100 mm	No	-	1–3 hrs	24 hrs	1.8 kg/m <sup>2</sup> /mm

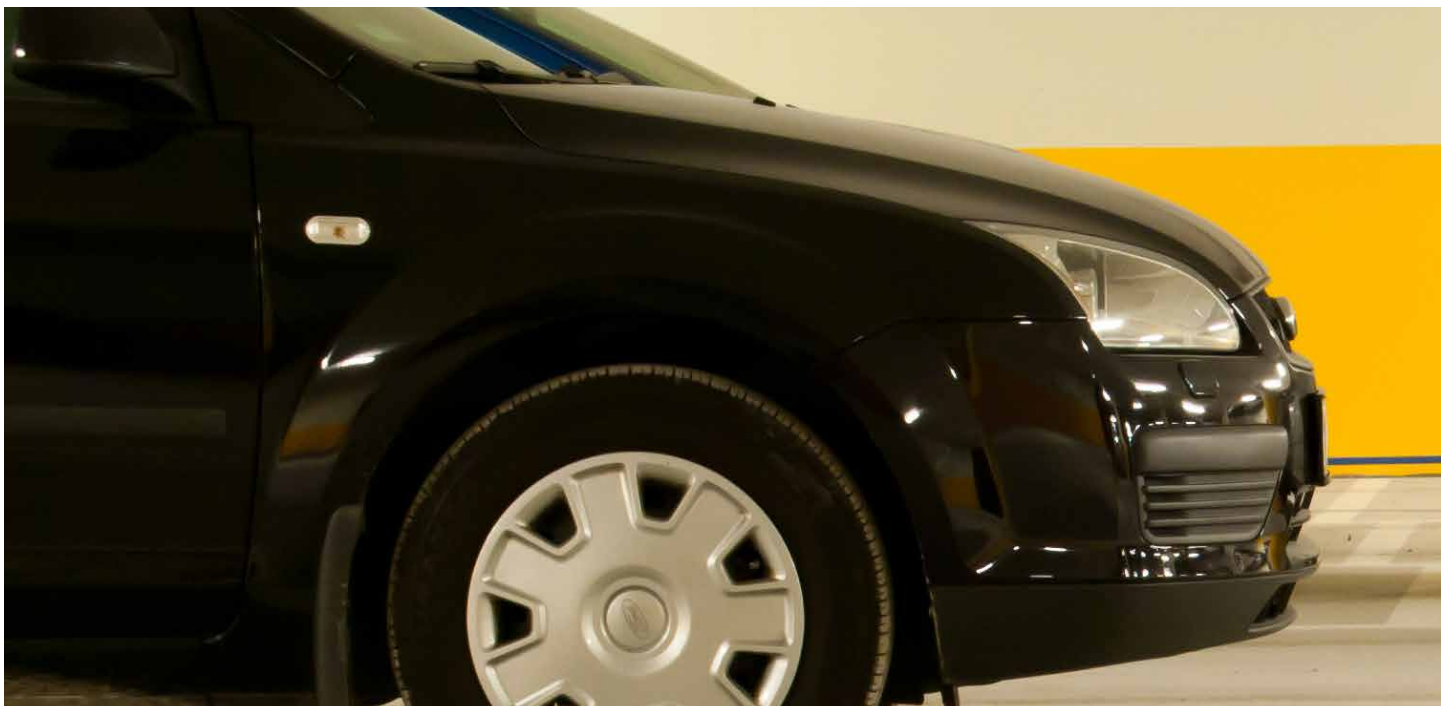
## Industrial screeds

CM 900	5–50 mm	Yes	125 mm	1–3 hrs	**	1.7 kg/m <sup>2</sup> /mm
CM 920	5–30 mm	Yes	135 mm	1–3 hrs	3–5 days	1.7 kg/m <sup>2</sup> /mm
CM 940	3–15 mm	Yes	140 mm	1–3 hrs	3–5 days	1.6 kg/m <sup>2</sup> /mm
CM 960	6–20 mm	Yes	115 mm	3–5 hrs	3–5 days	2.0 kg/m <sup>2</sup> /mm

\* = Flow rate at 40–70 mm is 125 mm

\*\* = Not for carpet surface

\*\*\* = 28 days





Tensile strength***	Classification	Packaging	Properties
> 1.5 MPa	CT-C20-F5	20 kg	Floor screed based on gypsum.
> 3.0 MPa	CT-C20-F4	15 kg	Pumpable, self-levelling screed for marine environments, Wheelmark certified
> 0.7 MPa	CT-C20-F5	20 kg	Pumpable, coarse, economical, self-levelling screed
> 1.5 MPa	CT-C30-F6	20 kg	Pumpable, fine, economical, self-levelling screed
> 1.5 MPa	CT-C30-F7	20 kg	Pumpable, quick-drying, fine, self-levelling screed with a high flow rate.
> 1.5 MPa	CT-C30-F6	20 kg	Pumpable, fibre reinforced, self-levelling screed (heated floor systems)
> 1.5 MPa	CT-C25-F5	20 kg	Pumpable, quick-drying, fibre reinforced, self-levelling screed (heated floor systems)
> 0.7 MPa	CT-C20-F5	20 kg	Pumpable, self-levelling screed, floating finish with reinforcement mesh at 30 mm
> 1.0 MPa	CT-C12-F4	4,5 kg	Fast drying, fine grained smoothing screed for repairs
> 1.0 MPa	CT-C25-F7	12,5 kg	Fast drying, fine grained smoothing screed for repairs
> 0.7 MPa	CT-C5-F2	12,5 kg	Lightweight, medium grained screed suitable for sloping (not with heated floors)
> 0.7 MPa	CT-C12-F3	20 kg	Fast drying, medium grained screed suitable for sloping (with heated floors)
> 0.7 MPa	CT-C12-F3	20 kg	Fast drying, fine grained screed
> 1.5 MPa	CT-C25-F5	20 kg	Pumpable, base-filler used under surface layer to spread load on concrete
> 1.5 MPa	CT-C30-F8	20 kg	Pumpable surface layer for light industrial wear and tear.
> 1.5 MPa	CT-C30-F7	20 kg	Pumpable surface layer for medium industrial wear and tear.
> 1.5 MPa	CT-C25-F7	20 kg	Pumpable surface layer for heavy duty industrial wear and tear.

CM 900 has been applied as the base filler and CM 960 has been applied as the surface layer. CM 960 is suited for environments with heavy loads.

High-rise building  
Hammarby sjöstad

Whichever product you choose you will always get the best products in terms of quality and price. Our product range has been developed to meet various job site challenges.

## Self-levelling screeds.

**Our pumpable self-levelling screeds** are highly adaptable and economical. Our range of self-levelling products is comprehensive and includes products that are suitable for the small hall floor right through to the big shopping mall. The product range has been developed to meet various job site challenges. You can choose a more economically advantageous screed on those occasions when the project permits a longer drying time.

For a more time-pressed schedule you can choose from our fast drying products. Combimix

has also developed a pumpable, self-levelling screed for marine environments. This product can be applied on steel floors on vessels and ferries.

Whichever product you choose you will always get the best products in terms of quality and price.

**Contact our sales department** on +46 171-46 65 90 for advice and tips about choosing products.



### CM 100 Gypsos

- For concrete, lightweight concrete, stone and ceramic tiles.
- Application thickness 5–70 mm, lightweight concrete 6–20 mm.
- Walkable after 1–3 hours.
- Drying time 10 mm/week, ceramic tiles 12 hours.
- Floor screed based on gypsum.
- Packaging: 20 kg, 1000 kg and bulk.



### CM 420 Offshore

- For steel or metall surfaces.
- Application thickness 3–30 mm.
- Walkable after 4 hours.
- Drying time 1–3 days, ceramic tiles 24 hours.
- Low volume weight, 1.1 kg/mm/m<sup>2</sup>
- Wheel mark approved.
- Packaging: 15 kg, 720 kg and bulk.





### CM 700 Coarse

- For concrete, lightweight concrete, stone and ceramic tile surfaces.
- Application thickness 5–70 mm, lightweight concrete 6–20 mm.
- Walkable after 1–3 hours.
- Drying time 10 mm/week, ceramic tiles 24 hours.
- Packaging: 20 kg, 1000 kg and bulk.



### CM 720 Fine

- For concrete, lightweight concrete, stone and ceramic tile surfaces.
- Application thickness 3–30 mm, lightweight concrete 6–10 mm.
- Walkable after 1–3 hours.
- Drying time 10 mm/week, ceramic tiles 16 hours.
- Packaging: 20 kg, 1000 kg and bulk.



### CM 740 Fast Fine

- For concrete, lightweight concrete, stone, ceramic tile, gypsum underlay, wood and homogenous PVC surfaces.
- Application thickness 3–30 mm lightweight concrete 6–10 mm.
- Walkable 1–3 hours.
- Drying time 12–24 hours, depending on layer thickness, ceramic tiles 12 hours.
- Packaging: 20 kg, 1000 kg and bulk.



### CM 760 Fibre

- For concrete, lightweight concrete, stone, ceramic tiles, gypsum underlay, wood, homogenous PVC surfaces and underfloor heating.
- Application thickness 5–50 mm, lightweight concrete 6–20 mm.
- Walkable after 1–3 hours.
- Drying time 1–3 days, ceramic tiles 12 hours.
- Reinforced with fibreglass.
- For exterior use, frost-resistant except in salt environments.
- Packaging: 20 kg, 1000 kg and bulk.



### CM 780 Fast Fibre

- For surfaces of concrete, lightweight concrete, stone, ceramic tiles and gypsum underlay surfaces. May be laid on wood if reinforcing net is employed.
- Application thickness 5–100 mm, lightweight concrete 6–100 mm.
- Walkable after 1–3 hours.
- Drying time 1–3 days, ceramic tiles 12 hours.
- Reinforced with fibreglass.
- Free-bearing 30 mm with reinforcing net.
- Packaging: 20 kg, 1000 kg and bulk.



### CM 790 Floor Mortar

- For concrete, lightweight concrete, stone and ceramic tile surfaces.
- Application thickness 15–100 mm, lightweight concrete 15–60 mm.
- Walkable after 2–3 hours.
- Drying time 2–3 days, ceramic tiles 12 hours.
- Free-bearing 30 mm with reinforcing net.
- Packaging: 20 kg, 1000 kg and bulk.

Combimix has developed a screed, which thanks to new technology, weighs 1/3 of comparable products, making it very ergonomic to use.

## Hand applied screeds.

**Our range includes everything** from fine to coarse hand applied screeds. We have developed a screed which weighs only 1/3 of comparable products, improving the ergonomics of the working environment. The new technology is based on recycled glass instead of sand. When time is of the essence we offer screeds that dry so fast that surface layers may be installed only after one hour. Find out more

about each individual product and its properties and advantages below. Our products meet the highest quality standards at competitive prices.

**Contact our sales department** on +46 171-46 65 90 for advice and tips about choosing products.



### FF 830 Fine

- For concrete, lightweight concrete, ceramic tiles, gypsum floor underlay, wood and homogeneous PVC surfaces.
- Application thickness 0–12 mm, 6–12 on lightweight concrete.
- Workable 15–20 min.
- Walkable 30–60 min.
- Laying floor covering 1–3 hours, ceramic tiles 1 hour.
- Packaging: 4.5 kg.



### CM 840 Fine

- For concrete, lightweight concrete, stone, ceramic tiles, gypsum underlay, wood and homogeneous PVC surfaces.
- Application thickness is 0–50 mm, 6–20 mm on lightweight concrete. Workable 20–30 min.
- Walkable 30–60 min. depending on layer thickness.
- Laying floor covering 1–3 hrs.
- Packaging: 12.5 kg.



### CM 8650 Light

- For concrete, lightweight concrete, stone, ceramic tiles and wooden joist frame surface with reinforcing net. Do not use with underfloor heating.
- Application thickness 25–125 mm.
- Workable 25–45 min.
- Ceramic tiles 3–6 hrs.
- 70 % lighter than concrete, 0.65 kg/m<sup>2</sup>/mm.
- Wheel mark approved.
- Packaging: 12.5 kg.



### CM 860 Coarse

- For concrete, stone and ceramic tiles surfaces.
- Application thickness 20–100 mm.
- Workable 20–30 min.
- Laying floor covering 24 hours, ceramic tiles 12 hours.
- Free-bearing 30 mm.
- Wheel mark approved.
- Packaging: 20 kg.



### CM 870 Fine

- For concrete, stone and ceramic tiles surfaces.
- Application thickness 10–100 mm.
- Workable 60 min.
- Laying floor covering 24 hours, ceramic tiles 12 hours.
- Free-bearing 30 mm with reinforcing net.
- Packaging: 20 kg.



Our base product together with one of our surface layer products offer a flooring system that can be very cost-efficient.

## Industrial screeds.

**Our broad industry range of screeds** contains a base product for filling and levelling concrete substrates and several surface layer products. Our base product together with one of our topping products offer a flooring system that can be very cost-efficient. Choice of surface layer product depends on how much wear and tear, pressure and temperature the final floor will be exposed to. We have a heavy duty

product that is frost-proof and suited for salty exterior environments. Find out more about each individual product and its properties and advantages below.

**Contact our sales department** on +46 171-46 65 90 for advice and tips about choosing products.



### CM 900 Industry Base

- For concrete surfaces.
- Application thickness 5–50 mm.
- Walkable 1–3 hours.
- Packaging: 20 kg, 1000 kg and bulk.



### CM 920 Industry

- For concrete, ceramic and stone surfaces.
- Application thickness 5–30 mm.
- Walkable 1–3 hours.
- Paintable with epoxy or similar after 3–5 days.
- Gives a finished floor (light industry).
- Suitable as foundation for epoxy.
- Packaging: 20 kg, 1000 kg and bulk.



### CM 940 Industry Top

- For concrete surfaces.
- Application thickness 3–15 mm.
- Walkable 1–3 hours.
- Paintable with epoxy or similar after 3–5 days.
- Gives a finished floor (suitable for truck traffic).
- Packaging: 20 kg, 1000 kg and bulk.



### CM 960 Industry Super Top

- For concrete surfaces.
- Application thickness 10–20 mm.
- Walkable 3–5 hours.
- Paintable with epoxy or similar after 3–5 days.
- Gives a finished floor (suitable for heavy duty wear).
- Suitable for repairing cargo docks.
- Frost-resistant in salty environment.
- Packaging: 20 kg, 1000 kg and bulk.

## Accessories.

Combimix does not only supply floor levelling products of the highest quality. We also offer a range of accessories to make your job easier.



### PP 600 Primer

- Binds dust and ensures adhesion to the surface to be covered.
- Seals the pores in the surface.
- Can be brushed out.
- Alkaline-resistant.
- Packaging: 1-, 5- and 20-litres



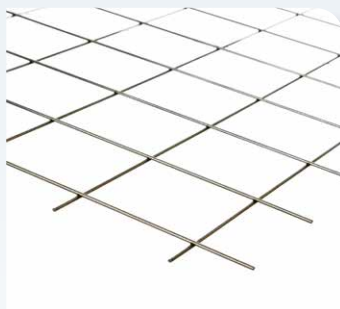
### Foam strips

- Prevents the screed from leaking into drains, adjacent rooms etc.
- Available for 15, 30 or 50 mm application thicknesses.



### Level pegs

- For levelling of floor.
- Millimetre gradation up to 65 mm. Millimetre gradation up to 100 mm (packaged with 800 nos).
- Self-adhesive.
- Packaging: 25 nos, 100 nos & 800 nos.



### Mesh

#### Steel reinforcement

- For reinforcing of floors.
- Available in sizes 1200x800 mm and 1250x2400 mm.

#### Glass fibre reinforcement net

- To remove surface tensions.
- 9x9 mm.



### Putty/trowel

- Putty knives and notched trowels.
- Available in sizes from 100–600 mm.



## You make us better.

### **We listen to our customers.**

Your valued input is a natural part of our development work. If you have any questions, suggestions or views regarding our floor levelling products please get in touch with us on +46 171 – 46 65 90 or [info@combimix.se](mailto:info@combimix.se). We can, of course, also help with advice about specific building technology matters.

---

[www.cosmopolymers.com](http://www.cosmopolymers.com)